

REMOVING - REFITTING : REAR WHEEL SPEED SENSOR

ESSENTIAL : Observe the safety and cleanliness recommendations ⓘ.

ESSENTIAL : All personnel carrying out work on a vehicle fitted with traction batteries must have received specific electric vehicle training and be authorised to work on these vehicles (observe the regulations in force in the respective country).

1. Tooling

Workshop equipment : Diagnostic tool.

2. Removing

Put the vehicle on a lift.

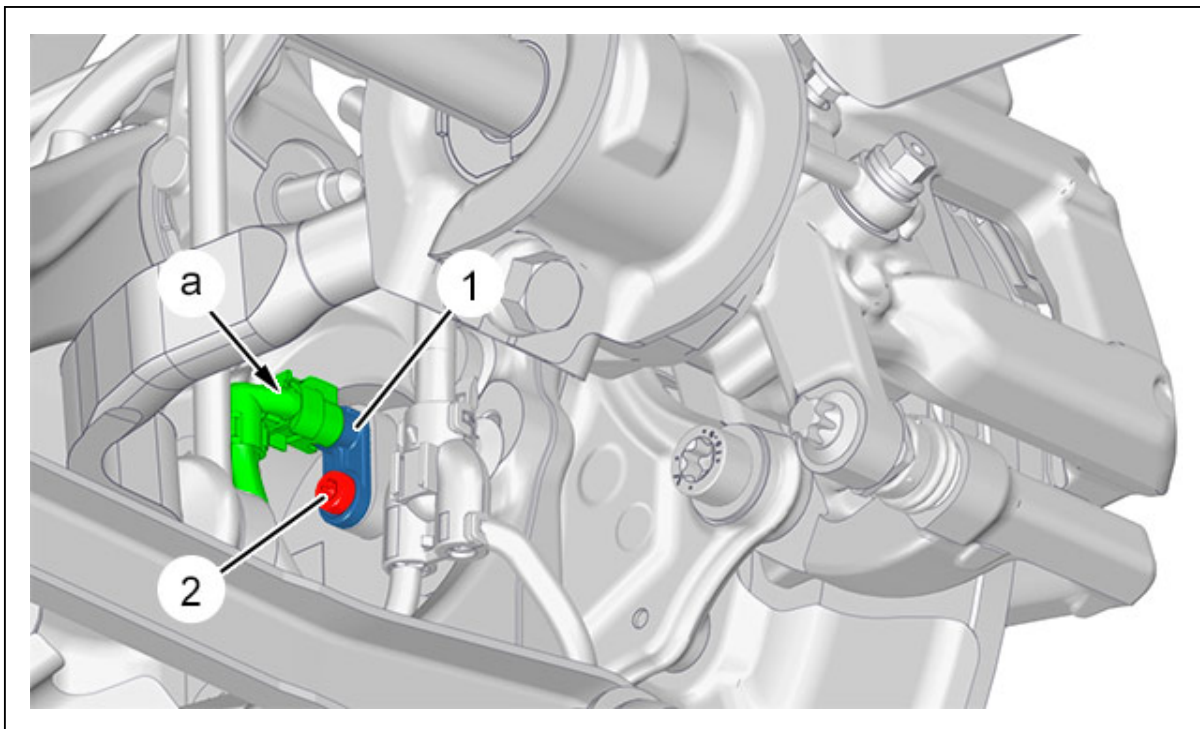


Figure : B3FG39CD

Disconnect the connector (at "a").

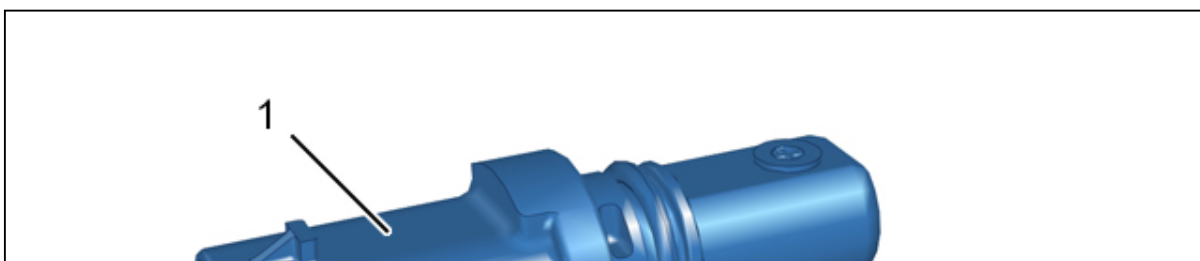
Remove :

- The bolt (2)
- The rear wheel speed sensor (1)

3. Refitting

CAUTION : Observe the tightening torques ⓘ.

CAUTION : Avoid knocks to the head of the rear wheel speed sensor (1).



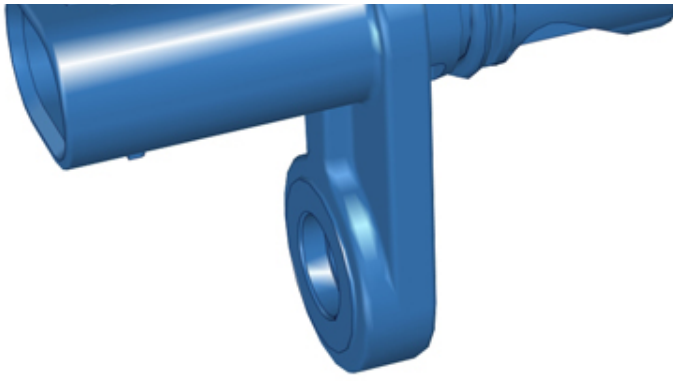


Figure : B3FG39DD

Check that the rear wheel speed sensor (1) is clean.

Refit :

- The rear wheel speed sensor (1)
- The bolt (2)

Connect the connector (at "a").

Return the vehicle to its wheels.

Read and clear the fault codes ; Using the diagnostic tool.